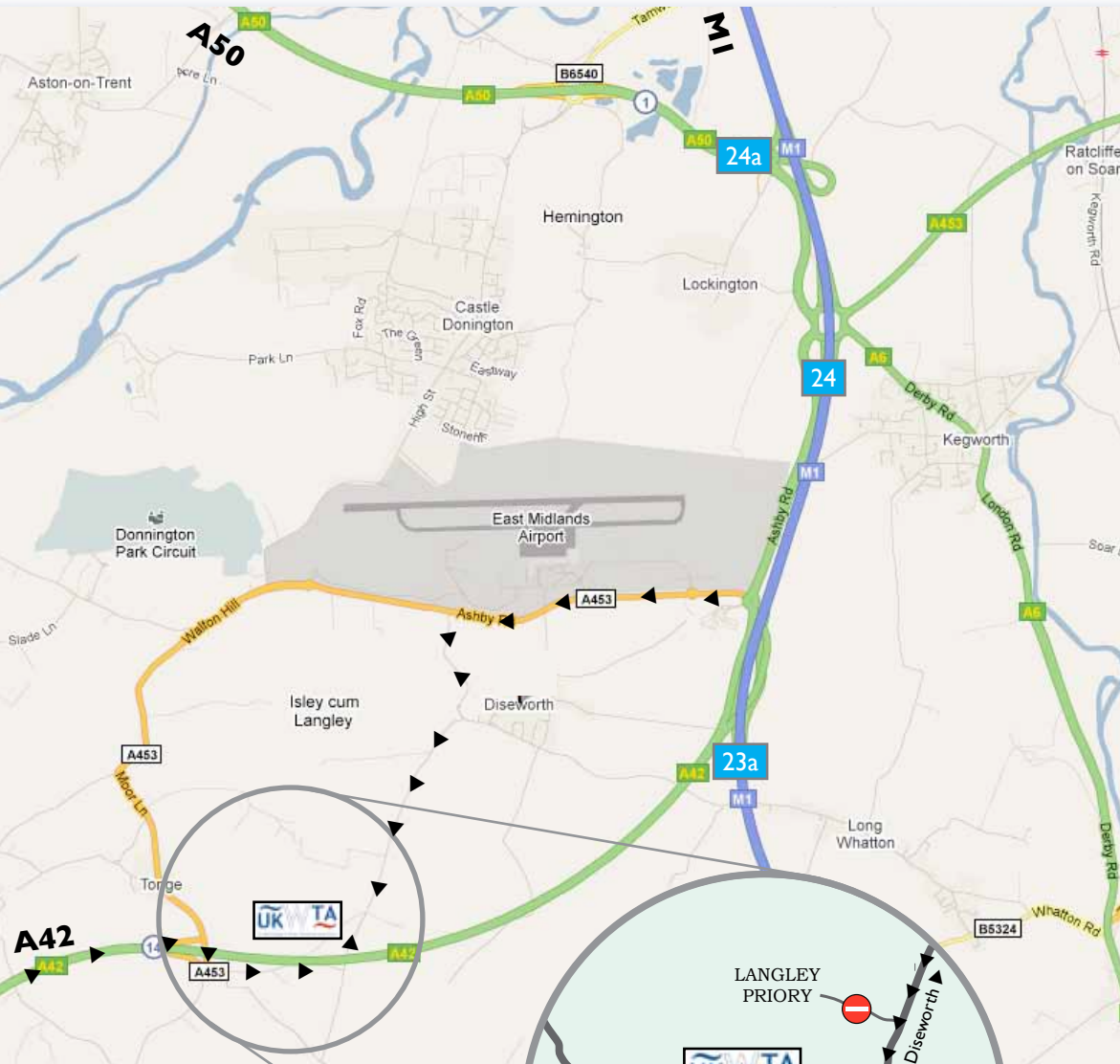


Directions to UKWTA



→ **A50 Eastbound from Stoke, Manchester**

Follow A453 signposted East Midlands Airport

↑ **M1 Northbound from Leicester, London**

Exit at Junction 23a (A453) signposted East Midlands Airport

↓ **M1 Southbound from Nottingham, Derby, Sheffield**

Exit at Junction 24 (A453) signposted East Midlands Airport

THEN CONTINUE:

- Follow A453 passed East Midlands Airport
- Take the second turning for Diseworth signposted “The Queens Head”
- Follow the bends passed a farm, then turn sharp right for Belton
- Continue for over a mile and turn right into The Walnut Yard opposite a white farm house

↑ **A42/M42 Northbound from Birmingham**

Exit at Junction 14 signposted Castle Donington

THEN CONTINUE:

- Turn right at the top of the slip road
- At the roundabout take first exit signposted Diseworth and Belton
- Continue for 1 mile
- At the t-junction turn left for Diseworth
- Go under A42 bridge, then turn left into The Walnut Yard opposite a white farm house



West Acre ♦ The Walnut Yard
Langley Priory ♦ Diseworth
Derbyshire ♦ DE74 2QQ

Tel 01530 225840

